

## Virtual Labs for Mac

The IT department at OSU offers access to three virtual computers labs. You can login to these labs from any computer with internet access. You will need your OKEY user name and OKEY password to login.

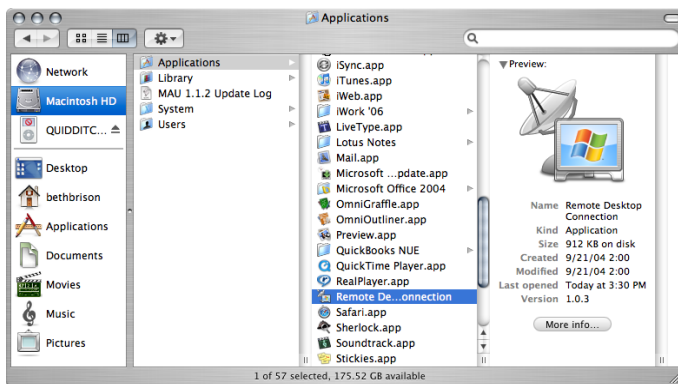
The web addresses for the three virtual computers labs and the software they offer are listed below:

<a href="https://virtuallab1.okstate.edu/">https://virtuallab1.okstate.edu/</a>	<a href="https://virtuallab2.okstate.edu/">https://virtuallab2.okstate.edu/</a>	<a href="https://virtualsas.okstate.edu/">https://virtualsas.okstate.edu/</a>
<ul style="list-style-type: none"><li>• MSOffice Suite</li><li>• S-Plus</li><li>• Maple 10</li><li>• H: drive</li><li>• G: drive</li></ul>	<ul style="list-style-type: none"><li>• SPSS 14</li><li>• Mathematica 5</li><li>• H: drive</li><li>• G: drive</li></ul>	<ul style="list-style-type: none"><li>• SAS</li><li>• Enterprise Miner 5.2</li><li>• H: drive</li><li>• G: drive</li></ul>

### How to Login to a Virtual Lab

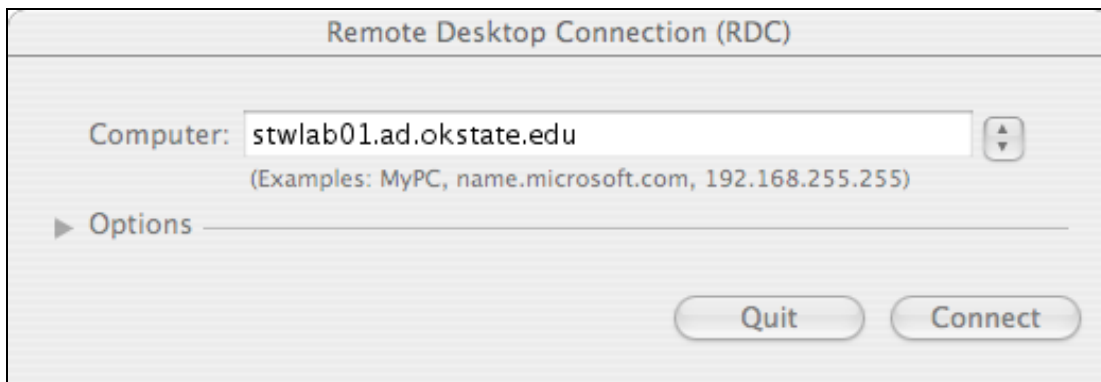
Step-by-step instructions for logging in to the virtual computer labs are listed below.

1. Open the Apple Remote Desktop Connection Application. See Figure 1.



**Figure 1: Apple Remote Desktop Connection**

2. Type the web address of the virtual lab you wish to visit in the address field of the remote desktop connection window. See Figure 2.



**Figure 2: Remote Desktop Connection Window**

3. Click the connect button. This will take you to the virtual lab web site.
4. When the Log On window appears, enter your OKEY email address and OKEY password. See Figure 3.



**Figure 3: Log On to Windows**

5. Click OK to enter the virtual lab.