

Virtual Labs for Windows

The IT department at OSU offers access to three virtual computers labs. You can login to these labs from any computer with internet access. You will need your OKEY user name and OKEY password to gain access. Depending on the internet browser you are using, you may also need to install an ActiveX control the first time you try to login.

The web addresses for the three virtual computers labs and the software they offer are listed below:

https://virtuallab1.okstate.edu/ <ul style="list-style-type: none">• MSOffice Suite• S-Plus• Maple 10• H: drive• G: drive	https://virtuallab2.okstate.edu/ <ul style="list-style-type: none">• SPSS 14• Mathematica 5• H: drive• G: drive	https://virtualsas.okstate.edu/ <ul style="list-style-type: none">• SAS• Enterprise Miner 5.2• H: drive• G: drive
--	---	--

How to Login to a Virtual Lab

Step-by-step instructions for logging in to the virtual computer labs are listed below.

1. Go to the web address for the lab you wish to visit.
2. When you arrive at the web site, you may be prompted to install an ActiveX control, if so, proceed with step 3. See Figure 1. If you are not prompted to install an ActiveX control, skip to step 6.

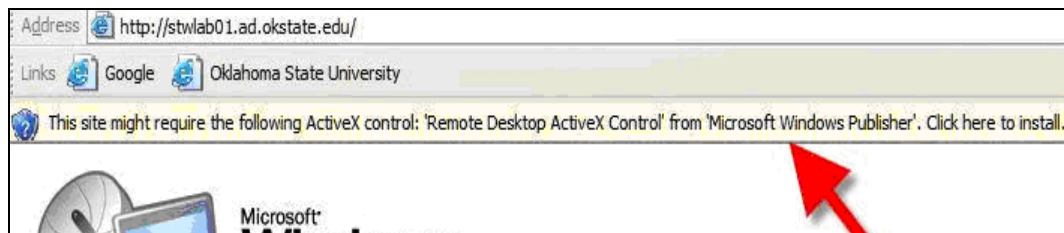


Figure 1: Security Bar

- Control right click on the information bar to open a drop down menu. See Figure 2.

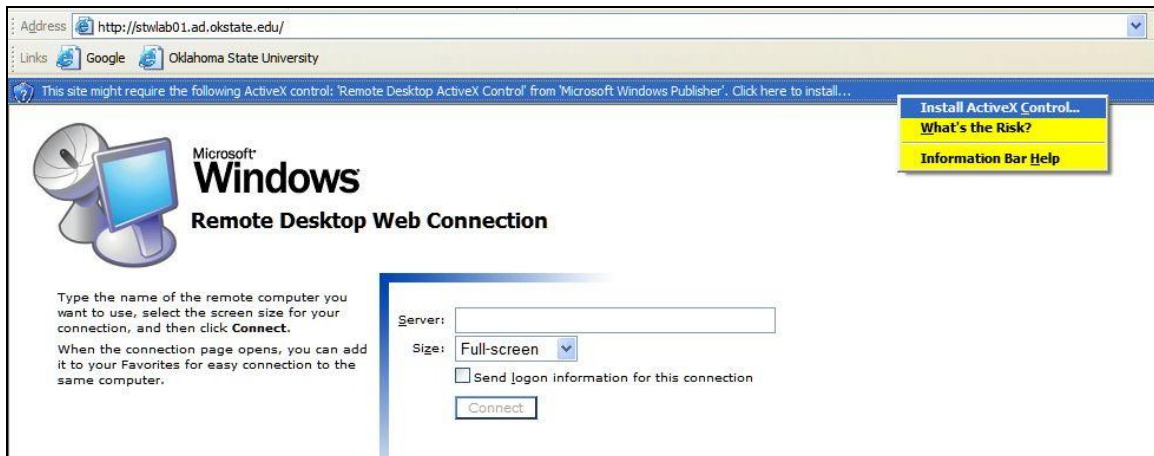


Figure 2: Installing ActiveX

- Select Install ActiveX Control from the drop down menu. This will open a Security Warning dialogue box as shown in Figure 3.
- Click the Install button to install the ActiveX control. See Figure 3. After installation, the program will return you to the login screen.

If you are again prompted to install the Active-X control, one of two things may correct this issue: Disable your pop-up blocker if it is on. If this does not correct the problem, add the virtual lab server (ex. virtuallab1.okstate.edu) you are attempting to connect to as a "trusted site" on your internet browser Security tab.



Figure 3: Security Warning Dialogue Box

6. Click the connect button. Do not enter anything in the server field. See Figure 4.

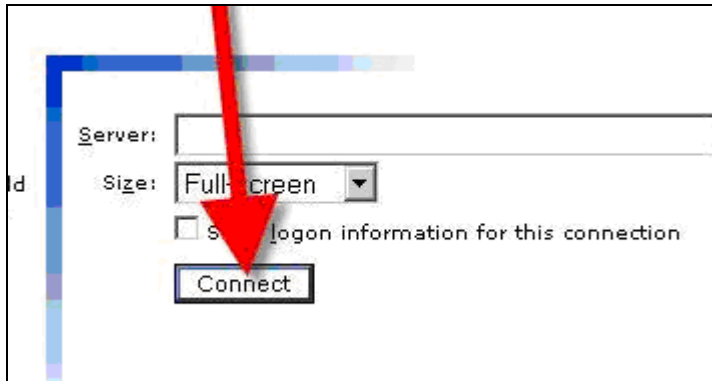


Figure 4: Connect

7. When the Log On window appears, enter your OKEY email address and OKEY password. See Figure 5.



Figure 5: Log On to Windows

8. Click OK.